



MANUFACTURER: TRINNOV AUDIO
MODELE: OPTIMIZER ALL MODEL
DEVICE TYPE: AUDIO PROCESSOR

CRESTRON MODULE V2

SIMPLWINDOWS NAME:

TRINNOV_OptimizerV2.umc with Trinnov_Optimizer_EngineV2.usp

HARDWARE REQUIRED:

TCP/IP SETUP CRESTRON: PORT 44100d

or

RS232- 19200 8/1/N

Wiring cross cable (Nul modem)

VENDOR SETUP:

FIX IP within Controller IP network mask

DESCRIPTION:

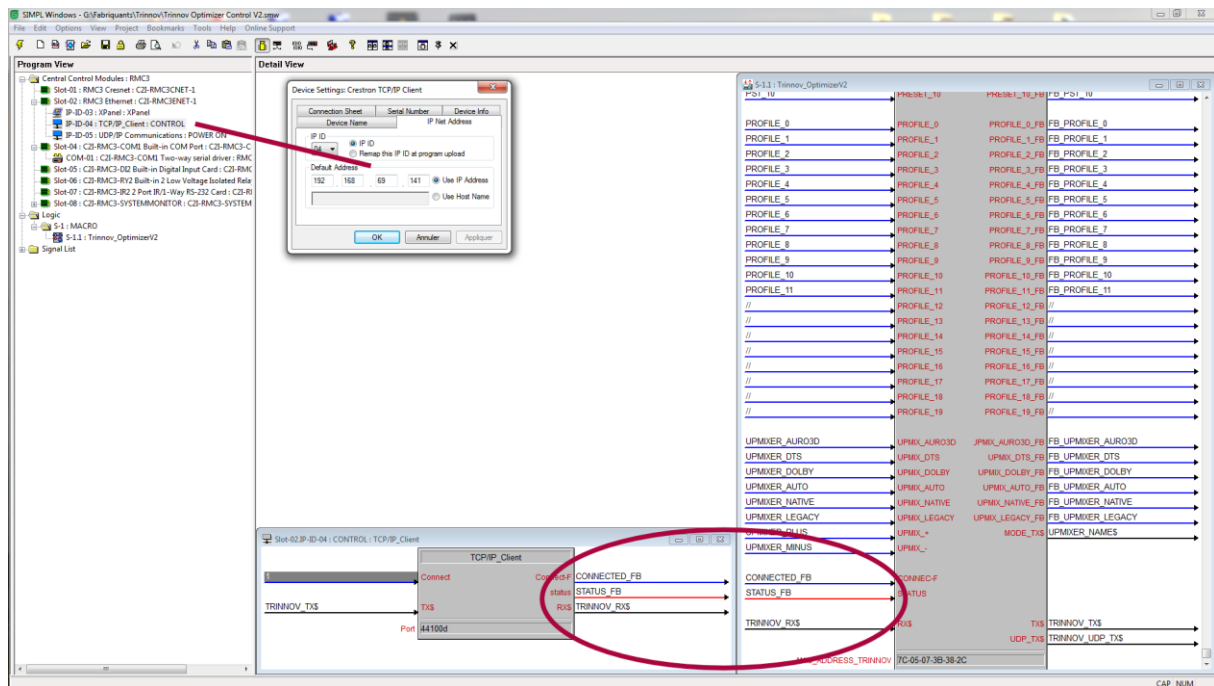
This module gives full control of all Trinnov Audio Processors, including the **ALTITUDE³²**. It could be use either with RS232 or with TCP/IP interface.

WARNING: Power ON command is not available with RS232.

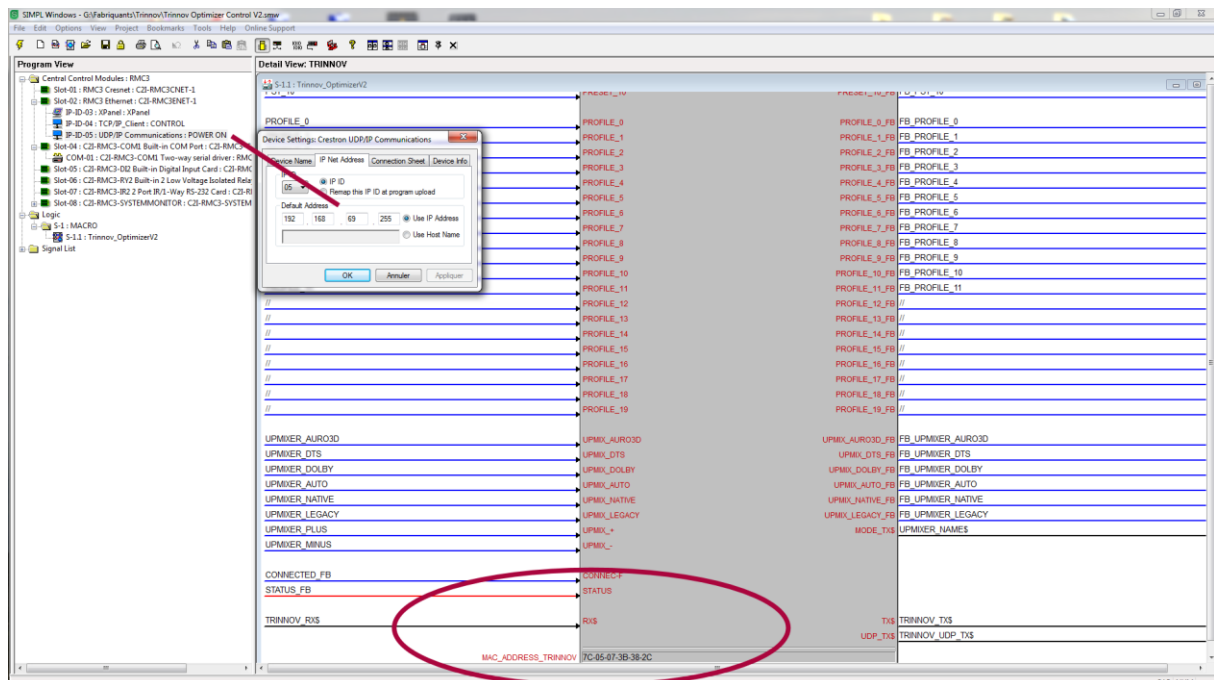
This version 2 adds Upmixer (only for the **ALTITUDE³²**) and Power commands. It has been tested with a Crestron serie 3 controller.

INSTALLATION:

1. Fit "Trinnov_OptimizerV2.umc" file in your Usrmacros folder with this associated pdf file
2. Fit "TRINNOV_OPTIMIZER_EngineV2.usp" and "TRINNOV_OPTIMIZER_EngineV2.ush" in your Usrplus folder ie: [c:\Program_Files](#) (x86)\Crestron\Simpl\Usrplus
3. Load Simpl Windows, and add the Trinnov macro in your program (you don't need to add the simpl+ program, it is already included in the macro).



4. Fit Optimizer IP address in TCP/IP client module (see above)
5. Link Module to Trinnov_Optimizer macro on all lines (see above)
6. Setup TCP/IP client module with Port: 44100d



7. Fit Optimizer IP address in UDP/IP Communication module (see above)
8. Setup UDP/IP Communication module with Port: 9d

9. Link UDP TX\$ with macro module output UDP_TX\$
10. Fit Optimizer Mac address for Power On control by UDP (see above)

COMMANDS:

Power command:	Power On (<u>only available for TCP/IP interface</u>).
Volume	Feed unscaled output level. This will be converted between -99 and +20dB or by +/- 0.5dB steps.
All Controls	Pulse to execute, all command have set on/set off/toggle interface. <u>WARNING</u> : acoustic corrections, level alignment and delay alignment are only available if Optimize in ON.
REMAP	Direct access to loudspeaker remapping controls
PROFILE	Profiles (Input) extended to 20.
UPMIXER	Upmixer processing with direct access
Connected_FB	Must be linked to TCP/IP client module
Status_FB	Must be linked to TCP/IP client module
TX\$	Must be linked to TCP/IP client module or RS232 interface

FEEDBACKS

All feedbacks are real updates from the audio processor, the feedback may be delayed if the processor is computing data.

RX\$ Must be linked to TCP/IP client module or RS232 interface